

# ROHM (600/750/900/1200)

## WALL HUNG VANITY

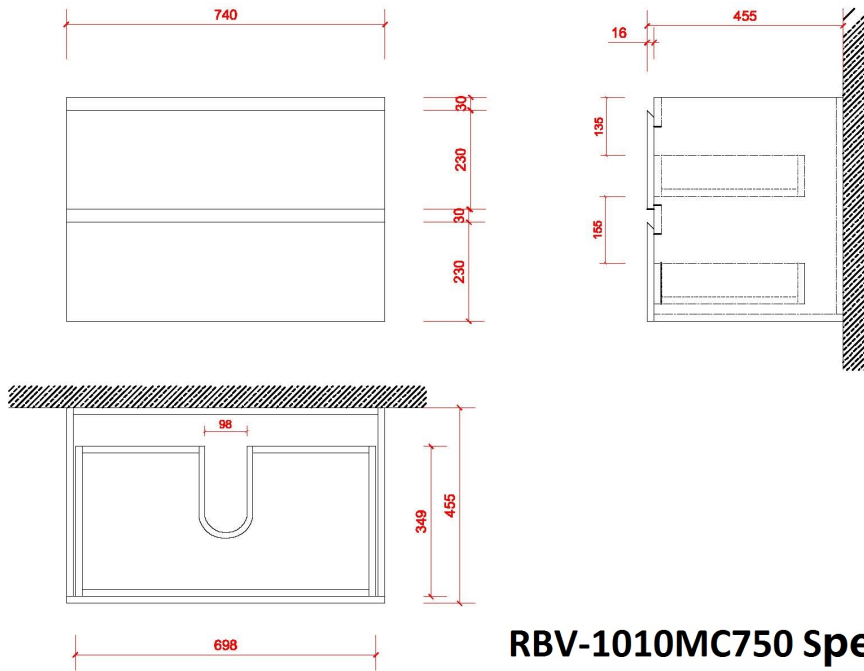
PATERSON

NEW ZEALAND 1955

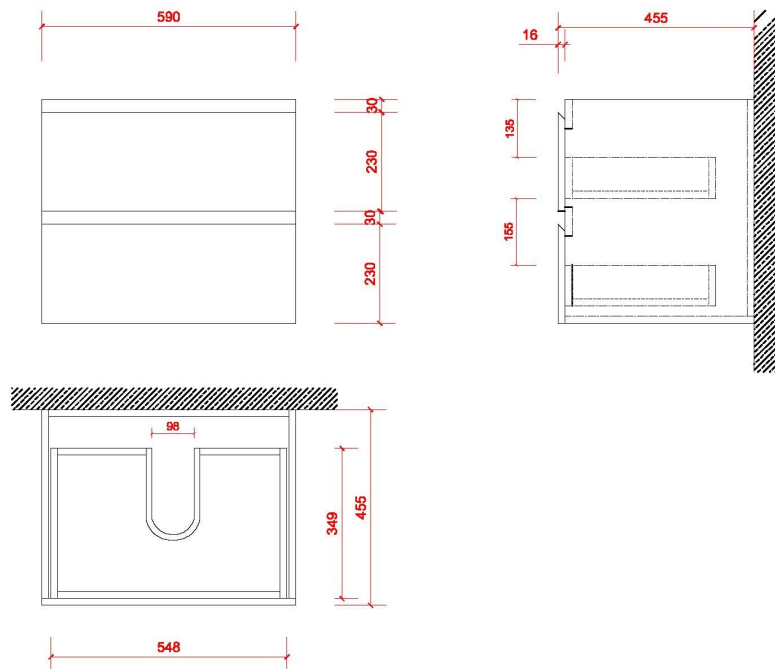


BRAND / MODEL	ROHM Wall Hung Vanity with Ceramic Basin Top – 2x Drawers
FINISH	White, Dark Oak, Light Oak
CODE	RBV-1010MCWH(600/750/900/1200)  600mm : 600W x 460D x 520H 750mm : 750W x 460D x 520H 900mm : 900W x 460D x 520H 1200mm : 1200W x 460D x 520H
ADDITIONAL INFORMATION	Wall Hung Basin with Ceramic Basin Double drawer with hidden handle 9-layer plywood Domain Puregrain Melamine coating DTC soft close hinges and drawer runner
WARRANTY	2 Years*

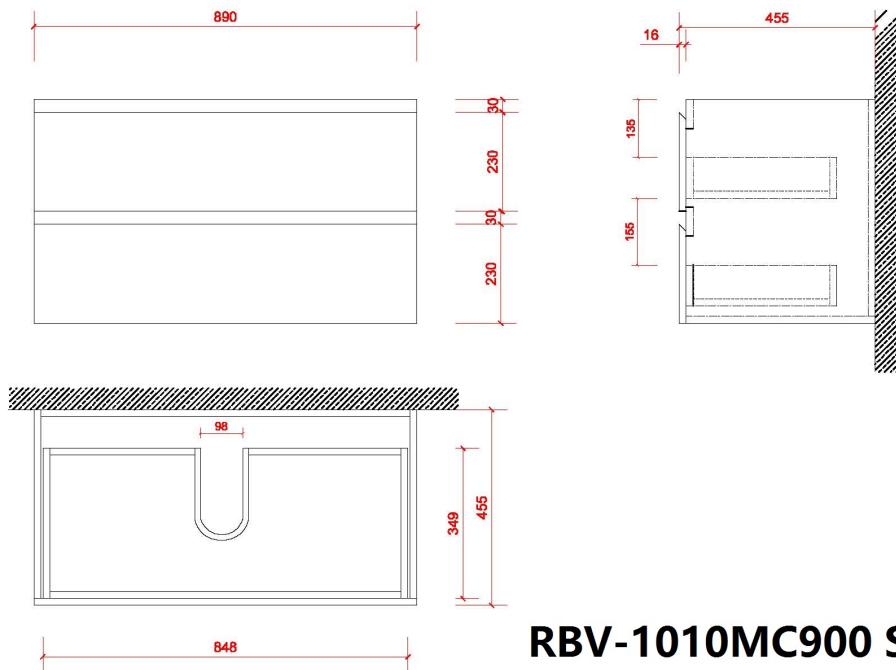
For more details on this product contact Paterson; (09) 309 3022 info@paterson.co.nz www.paterson.co.nz



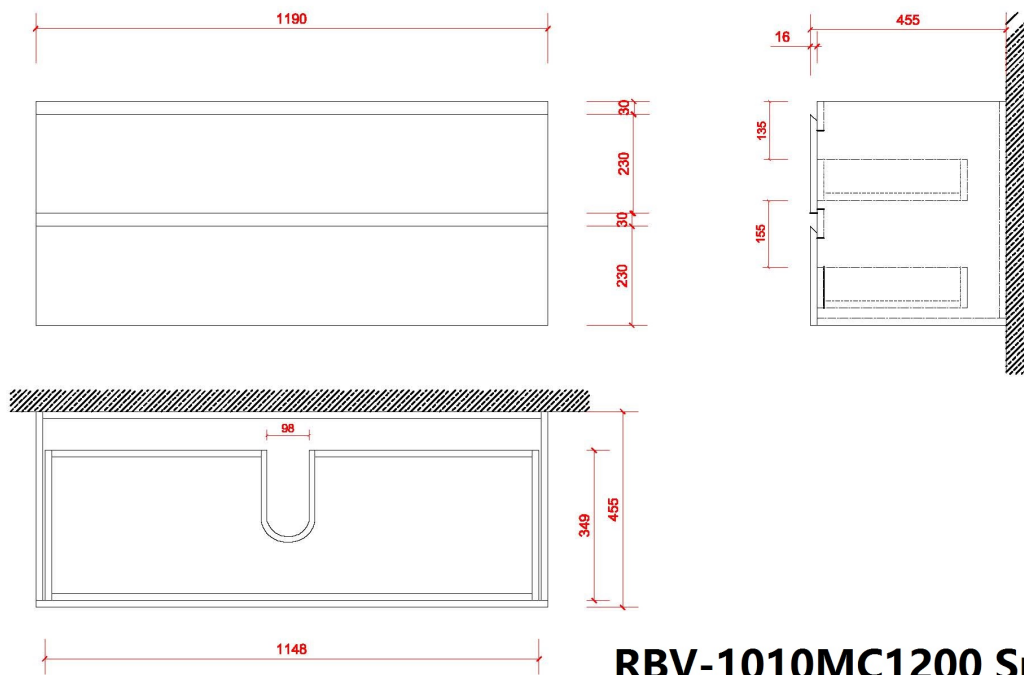
**RBV-1010MC750 Spec**



**RBV-1010MC600 Spec**



**RBV-1010MC900 Spec**



**RBV-1010MC1200 Spec**